



Directions Via Houma Navigational Canal From The Gulf of Mexico

City: Houma, La

(31nm inbound from Cat Island Pass on the Houma Navigational Canal)

Directions: Travel for approximately 31nm northbound on the Houma Navigational Canal from Cat Island Pass

Turn East (at LaShip) Into Munson Slip and travel for approximately .4nm

Reliant Recycling will be located on your left.

Houma Navigational Canal Draft: 13 ft.

Vertical Restrictions: None

Horizontal Restrictions: 140' at the Dulac Pontoon

Bridge: Dulac Pontoon (open 24/7)

Contact Numbers:

Jake Himel: (504) 669-2529

Office: (985) 851-2225



Ruler

Line Path

Measure the distance between multiple points on the ground

Length: 31.72 Nautical Miles

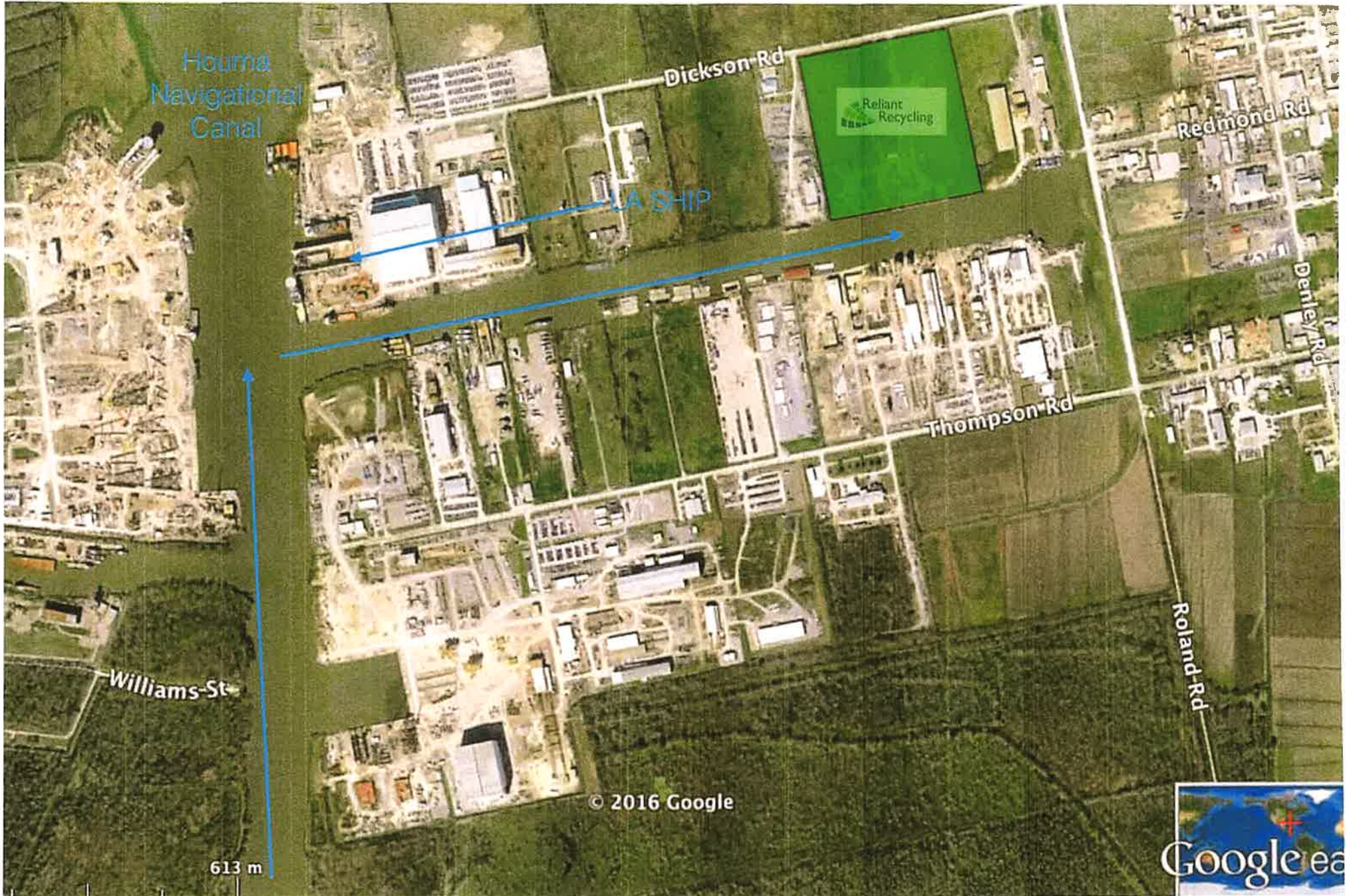
Mouse Navigation

Save Clear

22.8 km

© 2016 Google
 Data SIO, NOAA, U.S. Navy, NGA, GEBCO
 Image Landsat
 Image © 2016 TerraMetrics





Houma
Navigational
Canal

Dickson Rd

Redmond Rd

Denley Rd

Thompson Rd

Roland Rd

Williams-St

Reliant
Recycling

LA SHIP

613 m

© 2016 Google

