

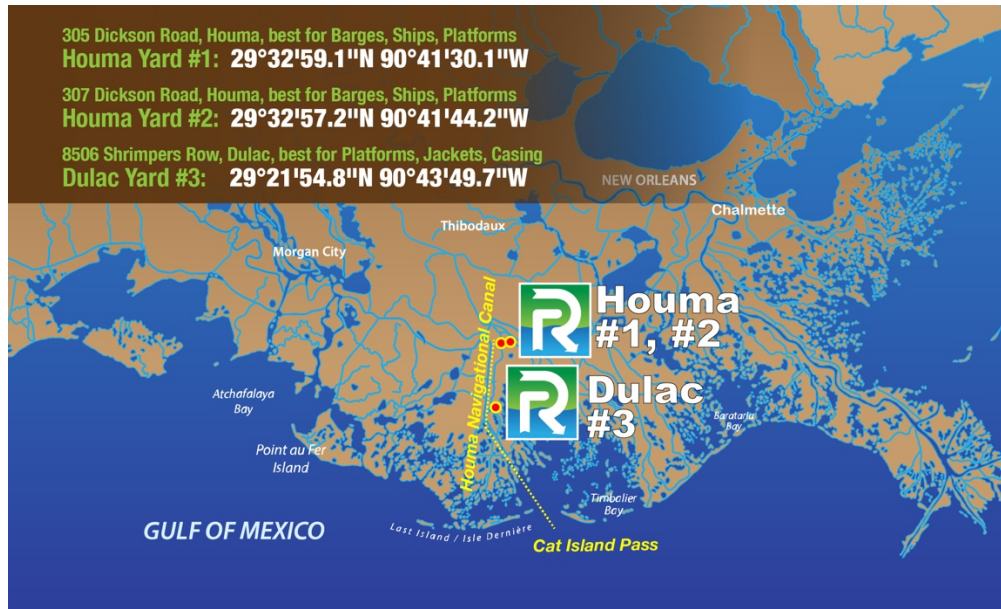


Phone: (985) 851-2225

[derryhimel@reliantrecycling.com](mailto:derryhimel@reliantrecycling.com)

[ross.armstrong@reliantrecycling.com](mailto:ross.armstrong@reliantrecycling.com)

[jake.himel@reliantrecycling.com](mailto:jake.himel@reliantrecycling.com)



### Directions to Reliant Recycling's Houma #1 & #2 Facilities via Houma Navigational Canal from the Gulf of Mexico

CITY: Houma, LA (31 nm inbound from Cat Island Pass on the Houma Navigational Canal)

DIRECTIONS: Travel for approximately 31 nm northbound on the Houma Navigational Canal from Cat Island Pass.

Turn East (at LaShip) into Munson Slip at travel for approximately .4 nm

Reliant Recycling's Houma yards are located on your left.

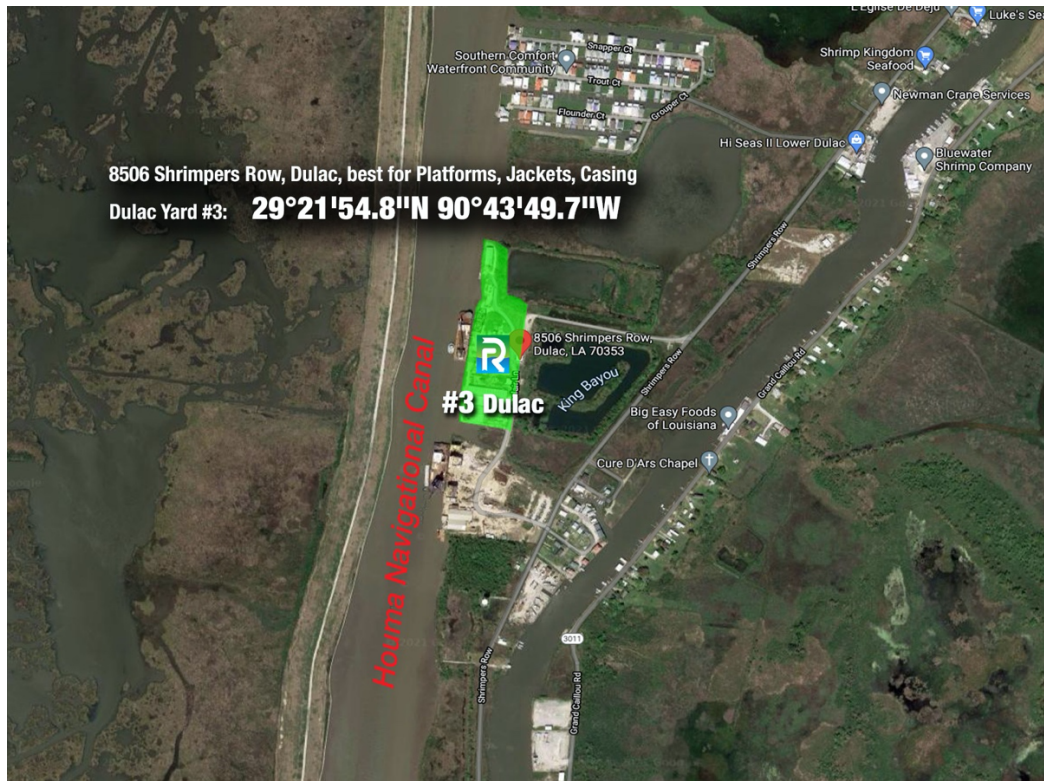
HOUMA NAVIGATIONAL CANAL DRAFT: 13 feet

VERTICAL RESTRICTIONS: None

HORIZONTAL RESTRICTIONS: 140 feet at the Dulac Pontoon Bridge, which is open 24/7

(continued)

(Reliant Recycling directions continued)



**Directions to Reliant Recycling's Dulac #3 Facility  
via Houma Navigational Canal from the Gulf of Mexico**

CITY: Dulac, LA (23 nm inbound from Cat Island Pass on the Houma Navigational Canal)

DIRECTIONS: Travel for approximately 23 nm northbound on the Houma Navigational Canal from Cat Island Pass.

Reliant Recycling's Dulac is located on the east bank.

HOUMA NAVIGATIONAL CANAL DRAFT: 13 feet

VERTICAL RESTRICTIONS: None

HORIZONTAL RESTRICTIONS: None



Phone: (985) 851-2225

[derrylhimel@reliantrecycling.com](mailto:derrylhimel@reliantrecycling.com)

[ross.armstrong@reliantrecycling.com](mailto:ross.armstrong@reliantrecycling.com)

[jake.himel@reliantrecycling.com](mailto:jake.himel@reliantrecycling.com)